

# Proteomics Solved.

New fully-integrated column and heating solutions for Thermo and SCIEX ion sources.



## Aurora Ultimate TS™

Compatible with EASY-Spray and Nanospray Flex

### Tech Specs

Column format	Analytical column
Column type	Reversed-phase
For use with	UHPLC
Length	25 cm
Inner Diameter	75 µm
Stationary phase	C18
Pore size	120 Å
Pressure	>1700 bar
Temp. limit	60°C
Particle size	1.7 µm
pH stability	1-8

### ionopticks

68-70 Hanover Street  
Fitzroy, Victoria 3065, Australia

To view our full product range visit  
[www.ionopticks.com/products](http://www.ionopticks.com/products)

For compatibility and technical support visit  
[helpcentre@ionopticks.com](mailto:helpcentre@ionopticks.com)

For general enquiries visit  
[ionopticks.com/get-in-touch](http://ionopticks.com/get-in-touch)

PRODUCT OF AUSTRALIA

ionopticks



© Copyright 2022. All rights reserved.



## Aurora Ultimate SX™

Compatible with OptiFlow Turbo V

Part No. AU18-25075C18-TS / AU18-25075C18-SX

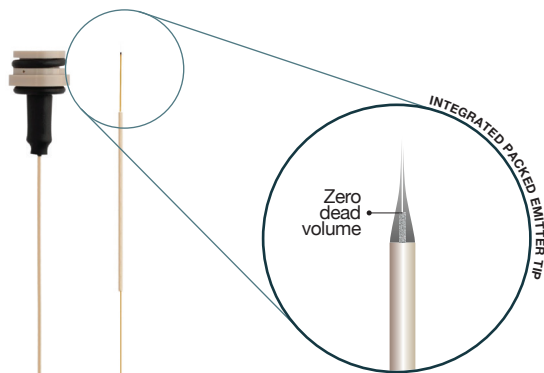
Aurora  
GENERATION 3

Aurora™  
ULTIMATE

25 cm nanoflow UHPLC packed emitter column.

# Aurora™ ULTIMATE

25 cm nanoflow UHPLC packed emitter column.

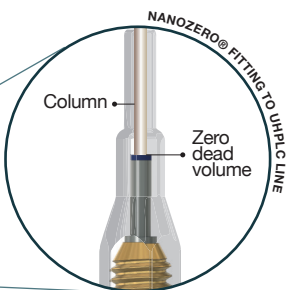


## The original game-changer.

The pinnacle of chromatography performance while minimizing overall cost and stress on equipment. Want it all? The Aurora Ultimate™ continues the legacy of IonOpticks' original 25 cm UHPLC line, delivering maximum peak capacity when time is less of a determining factor, but still a consideration.

### Product Benefits:

- + Extreme coverage and sensitivity without excessive time
- + Unlocks the true power of your mass spectrometer



## Spectacular protein IDs. Every run. Every time.

### Deep proteome coverage.

Maximise the number of identifications that you can achieve from a single shot sample analysis.

Figure 1  
7000+ Unique Protein IDs

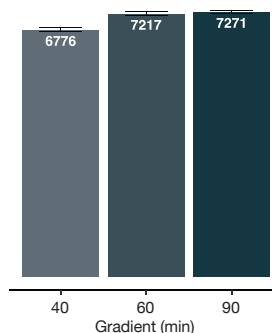


Figure 2  
70,000+ Unique Peptide IDs

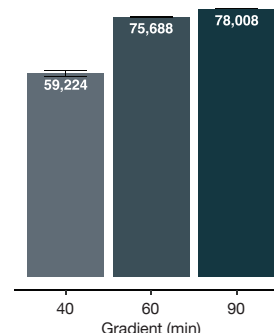
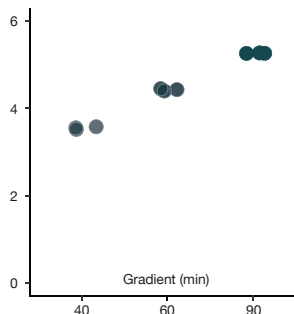


Figure 3  
Peak Width FWHM (Sec)



Figures 1, 2 & 3: Identified unique proteins, peptides and average Full Width at Half Maximum (FWHM) from 200 ng HeLa Tryptic Digest injection on an Aurora Ultimate™ 25 cm x 75 µm column using different gradient lengths. Samples were run on a Waters ACQUITY UPLC M-Class coupled to a Bruker timsTOF Pro, dia-PASEF acquisition. Data analysed using DIA-NN.

Figure 4: Yeast tryptic digest was spiked into a HeLa tryptic digest (200 ng) in different ratios (Sample A - 45 ng; Sample B - 15 ng). Samples were run on a Waters ACQUITY UPLC M-Class coupled to a Bruker timsTOF Pro, dia-PASEF acquisition using an Aurora 25 cm x 75 µm column. Data analysed using DIA-NN. Each point represents a unique protein with ratios calculated between the A and B samples. Figure 5: Boxplot demonstrating average ratio and interquartile range of data. Expected ratios are indicated with dashed lines.

### High quantitative accuracy

Identify large numbers of unique proteins without compromising quantitative accuracy.

Figure 4

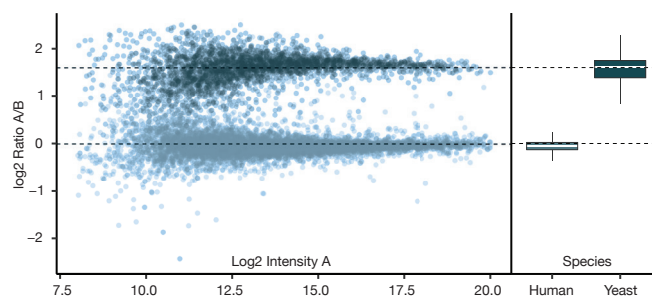
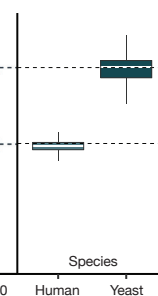


Figure 5



## Aurora Generation 3

UHPLC packed emitter columns

Delivering unrivalled coverage, throughput, sensitivity and reproducibility, Generation 3 Aurora Series™ columns embody all of the strengths of previous generations, augmented by three years of intensive research, development and industry collaboration.

## Designed by researchers, for researchers.

### We've listened. We've collaborated.

Throughout the development of the Generation 3 Aurora Series™ we've included a range of improvements to minimise experiment disruption and increase performance.

Integrated packed emitter

True-zero pre-column dead volume

'QuickFit' plug and play technology

High-pressure fitting holds >1700 bar



Neal Gould

Tegmine Therapeutics

"Aurora columns are fantastic. Not only do they perform better than other columns on the market, but they're durable and the single nanoZero® connection makes setup easy and simplifies troubleshooting."

I use them for all my routine peptide and PTM applications."